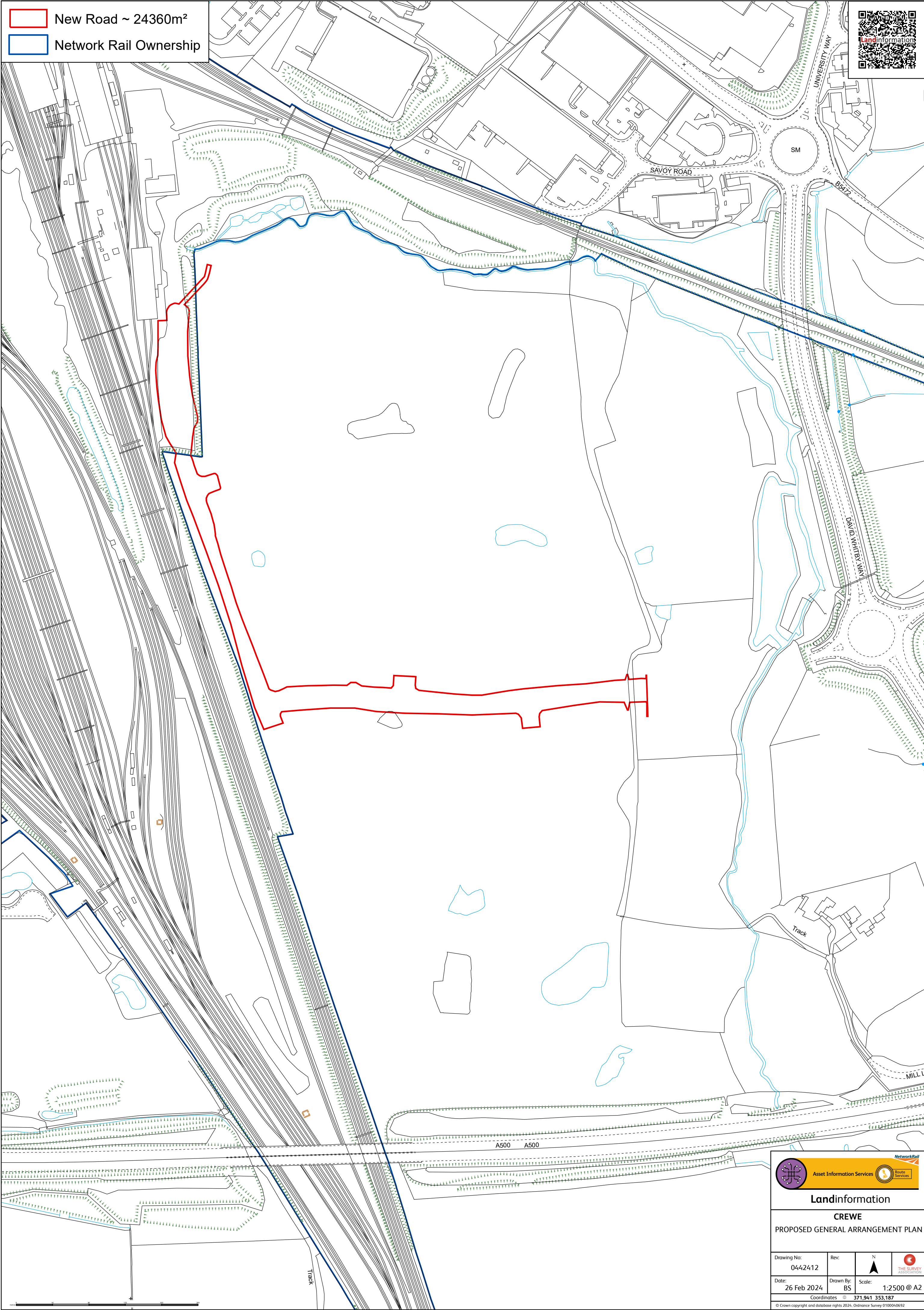
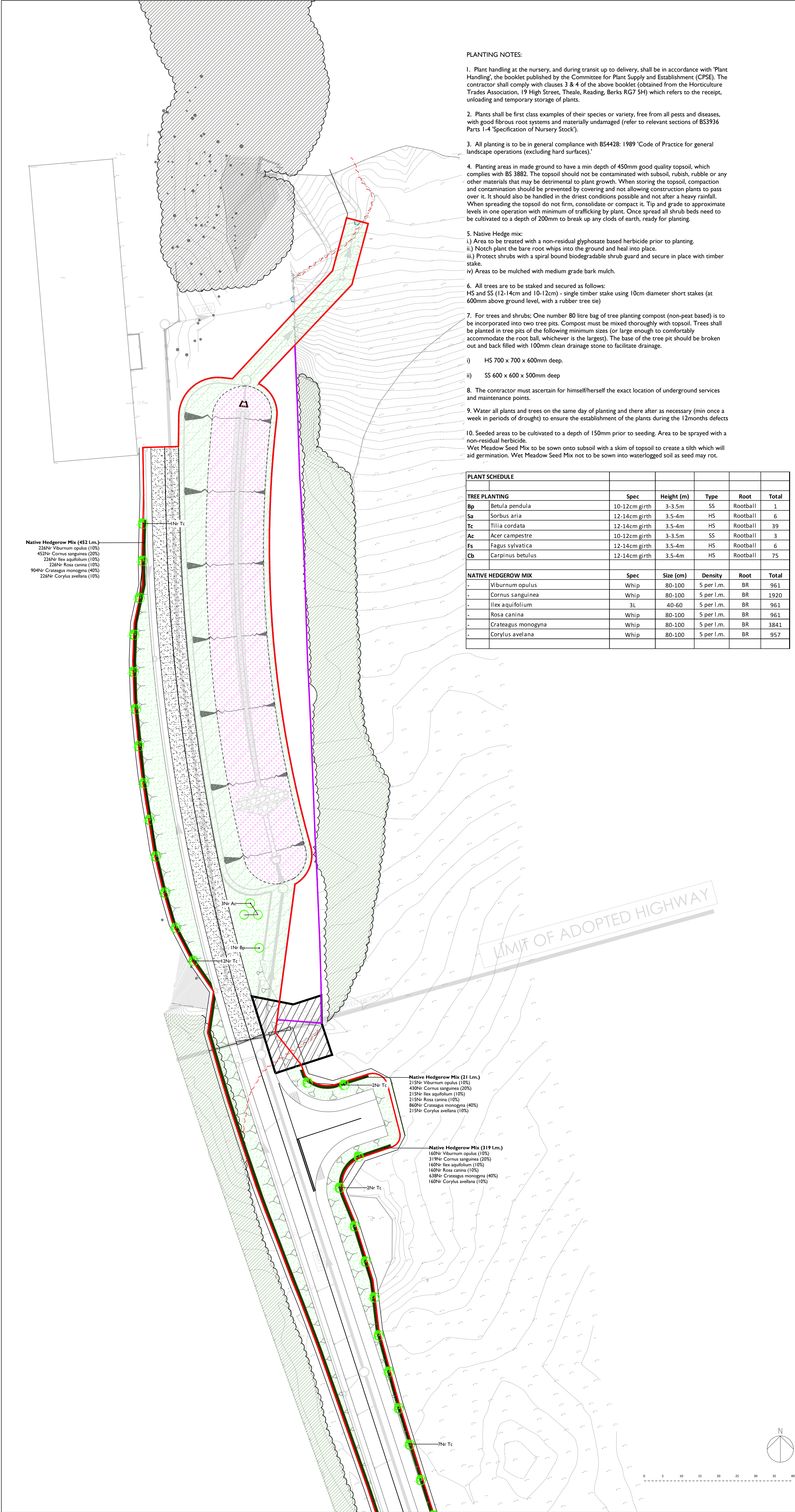


22/3158N

LAND WEST OFF DAVID
WHITBY WAY

CREWE





- PLANTING NOTES:
- Plant handling at the nursery, and during transit up to delivery, shall be in accordance with 'Plant Handling', the booklet published by the Committee for Plant Supply and Establishment (CPSE). The contractor shall comply with clauses 3 & 4 of the above booklet (obtained from the Horticulture Trades Association, 19 High Street, Theale, Reading, Berks RG7 5H) which refers to the receipt, unloading and temporary storage of plants.
 - Plants shall be first class examples of their species or variety, free from all pests and diseases, with good fibrous root systems and materially undamaged (refer to relevant sections of BS3936 Parts 1-4 'Specification of Nursery Stock').
 - All planting is to be in general compliance with BS4428: 1989 'Code of Practice for general landscape operations (excluding hard surfaces).'
 - Planting areas in made ground to have a min depth of 450mm good quality topsoil, which complies with BS 3882. The topsoil should not be contaminated with subsoil, rubbish, rubble or any other materials that may be detrimental to plant growth. When storing the topsoil, compaction and contamination should be prevented by covering and not allowing construction plants to pass over it. It should also be handled in the driest conditions possible and not after a heavy rainfall. When spreading the topsoil do not firm, consolidate or compact it. Tip and grade to approximate levels in one operation with minimum of trafficking by plant. Once spread all shrub beds need to be cultivated to a depth of 200mm to break up any clods of earth, ready for planting.
 - Native Hedge mix:
 - Area to be treated with a non-residual glyphosate based herbicide prior to planting.
 - Notch plant the bare root whips into the ground and heal into place.
 - Protect shrubs with a spiral bound biodegradable shrub guard and secure in place with timber stake.
 - Areas to be mulched with medium grade bark mulch.
 - All trees are to be staked and secured as follows:
HS and SS (12-14cm and 10-12cm) - single timber stake using 10cm diameter short stakes (at 600mm above ground level, with a rubber tree tie)
 - For trees and shrubs; One number 80 litre bag of tree planting compost (non-peat based) is to be incorporated into two tree pits. Compost must be mixed thoroughly with topsoil. Trees shall be planted in tree pits of the following minimum sizes (or large enough to comfortably accommodate the root ball, whichever is the largest). The base of the tree pit should be broken out and back filled with 100mm clean drainage stone to facilitate drainage.
 - HS 700 x 700 x 600mm deep.
 - SS 600 x 600 x 500mm deep
 - The contractor must ascertain for himself/herself the exact location of underground services and maintenance points.
 - Water all plants and trees on the same day of planting and there after as necessary (min once a week in periods of drought) to ensure the establishment of the plants during the 12months defects
 - Seeded areas to be cultivated to a depth of 150mm prior to seeding. Area to be sprayed with a non-residual herbicide.
Wet Meadow Seed Mix to be sown onto subsoil with a skim of topsoil to create a tilth which will aid germination. Wet Meadow Seed Mix not to be sown into waterlogged soil as seed may rot.

PLANT SCHEDULE					
TREE PLANTING		Spec	Height (m)	Type	Total
Bp	Betula pendula	10-12cm girth	3-3.5m	SS	Rootball
Sa	Sorbus aria	12-14cm girth	3.5-4m	HS	Rootball
Tc	Tilia cordata	12-14cm girth	3.5-4m	HS	Rootball
Ac	Acer campestre	10-12cm girth	3-3.5m	SS	Rootball
Fs	Fagus sylvatica	12-14cm girth	3.5-4m	HS	Rootball
Cb	Carpinus betulus	12-14cm girth	3.5-4m	HS	Rootball
NATIVE HEDGEROW MIX		Spec	Size (cm)	Density	Total
-	Viburnum opulus	Whip	80-100	5 per l.m.	BR
-	Cornus sanguinea	Whip	80-100	5 per l.m.	BR
-	Ilex aquifolium	3L	40-60	5 per l.m.	BR
-	Rosa canina	Whip	80-100	5 per l.m.	BR
-	Crateagus monogyna	Whip	80-100	5 per l.m.	BR
-	Corylus avelana	Whip	80-100	5 per l.m.	BR

- LEGEND
- SOFT LANDSCAPE**
- Existing Woodland to be Retained**
Approximate extents of existing woodland to be retained. To be retained in line with BS5837:2012.
 - Existing Trees, Scrub and Hedgerow to be Retained**
Approximate extents to be retained in line with BS5837:2012.
 - Existing Trees, Scrub and Hedgerow to be Removed**
Approximate extents to be removed, outside of bird nesting season
 - Proposed Native Hedgerow**
To be planted as 80-100cm BR whips at 5 plants per lin.m. To consist of at least 5 native shrub species and provide opportunities for nesting and foraging.
 - Proposed Street Trees**
Trees to comprise 12-14cm girth Heavy Standards with 2m clear stem. To be native species e.g. Sorbus aria.
 - Proposed Native Trees**
Trees within swale and open space 10-12cm girth Selected Standard with 2m clear stem. To consist of locally native species.
 - Proposed Wet Meadow Seed Mix**
To be WFG9 Wetland and Ponds by Germinal or similar approved sown at 4g per sq.m
 - Proposed Species Rich Grassland**
To be WFG20 by Germinal or similar approved sown at 4g per sq.m

See drawing 5246.01 for plant schedule

Rev B - Adjustments to red line boundary
GBS 29/02/2024

Rev A - Adjustments to drainage and woodland description
GBS 10/05/2023



dep LANDSCAPE ARCHITECTURE LTD

2 COMMERCIAL STREET
MANCHESTER, M15 4RQ
T: 0161 2419878
E: info@dep.co.uk
W: www.dep.co.uk

Client
J. Murphy & Sons Limited

Project
Arriva Train Care Access Road

Description
Masterplan incl. Planting (Sheet 1 of 3)

Status
Preliminary

Scale
1:500@A1

Drawn
GBS(TR)

Job number
5246

Drawing number
01

Date
Dec. '23

Revision
B

Copyright DEP Landscape Architecture Ltd

All levels and dimensions to be checked on site by contractor prior to commencement. Any variations to be reported to the client. This drawing is to be read in conjunction with all others relating to the project and all information derived accordingly; any anomalies to be reported to the client. Do not scale from this drawing. Use figured dimensions only. Work shown on this drawings to be carried out in accordance with current British Standards and Codes of Practice.

© Copyright to DEP Landscape Architecture Limited. The information shown on this drawing shall not be reproduced or copied in any form without prior written consent from DEP Landscape Architecture Limited.

PLANTING NOTES:

1. Plant handling at the nursery, and during transit up to delivery, shall be in accordance with 'Plant Handling', the booklet published by the Committee for Plant Supply and Establishment (CPSE). The contractor shall comply with clauses 3 & 4 of the above booklet (obtained from the Horticulture Trades Association, 19 High Street, Theale, Reading, Berks RG7 5H) which refers to the receipt, unloading and temporary storage of plants.

2. Plants shall be first class examples of their species or variety, free from all pests and diseases, with good fibrous root systems and materially undamaged (refer to relevant sections of BS3936 Parts 1-4 'Specification of Nursery Stock').

3. All planting is to be in general compliance with BS4428: 1989 'Code of Practice for general landscape operations (excluding hard surfaces)'.

4. Planting areas in made ground to have a min depth of 450mm good quality topsoil, which complies with BS 3882. The topsoil should not be contaminated with subsoil, rubish, rubble or any other materials that may be detrimental to plant growth. When storing the topsoil, compaction and contamination should be prevented by covering and not allowing construction plants to pass over it. It should also be handled in the driest conditions possible and not after a heavy rainfall. When spreading the topsoil do not firm, consolidate or compact it. Tip and grade to approximate levels in one operation with minimum of trafficking by plant. Once spread all shrub beds need to be cultivated to a depth of 200mm to break up any clods of earth, ready for planting.

5. Native Hedge & Shrub mix:
i.) Area to be treated with a non-residual glyphosate based herbicide prior to planting.
ii.) Notch plant the bare root whips into the ground and heal into place.
iii.) Protect shrubs with a spiral bound biodegradable shrub guard and secure in place with timber stake.
iv.) Areas to be mulched with medium grade bark mulch.

6. All trees are to be staked and secured as follows:
HS and SS (12-14cm and 10-12cm) - single timber stake using 10cm diameter short stakes (at 600mm above ground level, with a rubber tree tie)

7. For trees and shrubs; One number 80 litre bag of tree planting compost (non-peat based) is to be incorporated into two tree pits. Compost must be mixed thoroughly with topsoil. Trees shall be planted in tree pits of the following minimum sizes (or large enough to comfortably accommodate the root ball, whichever is the largest). The base of the tree pit should be broken out and back filled with 100mm clean drainage stone to facilitate drainage.

- i) HS 700 x 700 x 600mm deep.
ii) SS 600 x 600 x 500mm deep

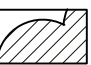
8. The contractor must ascertain for himself/herself the exact location of underground services and maintenance points.


9. Water all plants and trees on the same day of planting and there after as necessary (min once a week in periods of drought) to ensure the establishment of the plants during the 12months defects

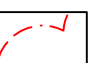
10. Seeded areas to be cultivated to a depth of 150mm prior to seeding. Area to be sprayed with a non-residual herbicide.
Wet Meadow Seed Mix to be sown onto subsoil with a skim of topsoil to create a tilth which will aid germination. Wet Meadow Seed Mix not to be sown into waterlogged soil as seed may rot.

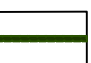
LEGEND


SOFT LANDSCAPE


 **Existing Woodland to be Retained**
Approximate extents of existing woodland to be retained. To be retained in line with BS5837:2012 .


 **Existing Trees, Scrub and Hedgerow to be Retained**
Approximate extents to be retained in line with BS5837:2012 .

 **Existing Trees, Scrub and Hedgerow to be Removed**
Approximate extents to be removed, outside of bird nesting season

 **Proposed Native Hedgerow**
To be planted as 80-100cm BR whips at 5 plants per lin.m. To consist of at least 5 native shrub species and provide opportunities for nesting and foraging.

 **Proposed Street Trees**
Trees to comprise 12-14cm girth Heavy Standards with 2m clear stem. To be native species e.g. Sorbus aria.

 **Proposed Native Trees**
Trees within swale and open space 10-12cm girth Selected Standard with 2m clear stem. To consist of locally native species.

 **Proposed Wet Meadow Seed Mix**
To be WFG9 Wetland and Ponds by Germinal or similar approved sown at 4g per sq.m

 **Proposed Species Rich Grassland**
To be WFG20 by Germinal or similar approved sown at 4g per sq.m

See drawing 5246.01 for plant schedule

Rev B - Adjustments to red line boundary
GBS 29/02/2024

Rev A - Adjustments to drainage and woodland description
GBS 10/05/2023



DEP LANDSCAPE ARCHITECTURE LTD

2 COMMERCIAL STREET
MANCHESTER, M15 4RQ
T: 0161 2419878
E: info@dep.co.uk
W: www.dep.co.uk

Client
J. Murphy & Sons Limited

Project
Arriva Train Care Access Road

Description
Masterplan incl. Planting (Sheet 2 of 3)

Status
Preliminary

Scale
1:500@A1

Drawn
GBS(TR)

Job number
5246

Drawing number
01

Date
Dec. '23

Revision
B

Copyright DEP Landscape Architecture Ltd

All levels and dimensions to be checked on site by contractor prior to commencement; Any variations to be reported to the client. This drawing is to be read in conjunction with all others relating to the project and all information derived accordingly; any anomalies to be reported to the client. Do not scale from this drawing. Use figured dimensions only. Work shown on this drawings to be carried out in accordance with current British Standards and Codes of Practice.

© Copyright to DEP Landscape Architecture Limited. The information shown on this drawing shall not be reproduced or copied in any form without prior written consent from DEP Landscape Architecture Limited.

1. Plant handling at the nursery, and during transit up to delivery, shall be in accordance with 'Plant Handling', the booklet published by the Committee for Plant Supply and Establishment (CPSE). The contractor shall comply with clauses 3 & 4 of the above booklet (obtained from the Horticulture Trades Association, 19 High Street, Theale, Reading, Berks RG7 5H) which refers to the receipt, unloading and temporary storage of plants.

3. All planting is to be in general compliance with BS4428: 1989 'Code of Practice for general landscape operations (excluding hard surfaces).'

5. Native Hedge & Shrub mix:

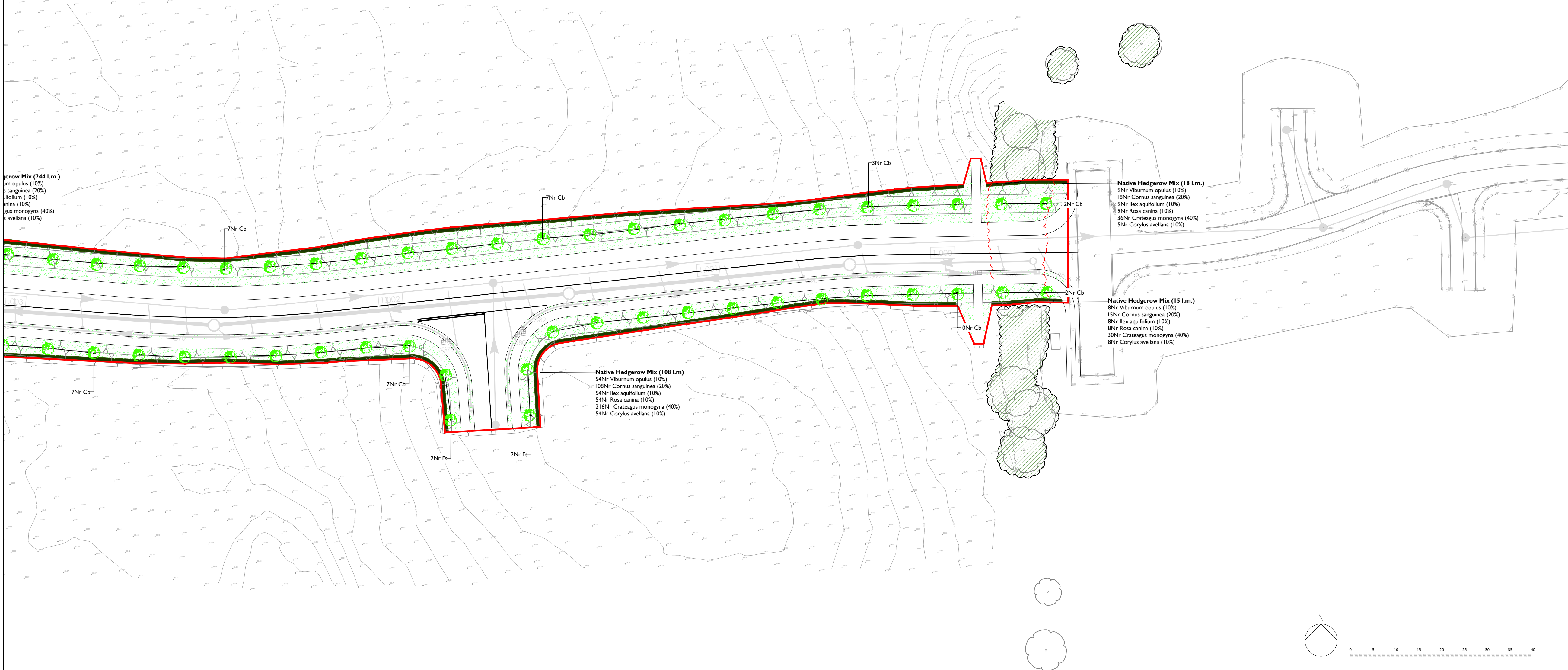
- i.) Area to be treated with a non-residual glyphosate based herbicide prior to planting.
- ii.) Notch plant the bare root whips into the ground and heal into place.
- iii.) Protect shrubs with a spiral bound biodegradable shrub guard and secure in place with timber stake.
- iv.) Areas to be mulched with medium grade bark mulch.

7. For trees and shrubs; One number 80 litre bag of tree planting compost (non-peat based) is to be incorporated into two tree pits. Compost must be mixed thoroughly with topsoil. Trees shall be planted in tree pits of the following minimum sizes (or large enough to comfortably accommodate the root ball, whichever is the largest). The base of the tree pit should be broken out and back filled with 100mm clean drainage stone to facilitate drainage.

8. The contractor must ascertain for himself/herself the exact location of underground services and maintenance points.

10. Seeded areas to be cultivated to a depth of 150mm prior to seeding. Area to be sprayed with a non-residual herbicide.

Wet Meadow Seed Mix to be sown onto subsoil with a skim of topsoil to create a tilth which will aid germination. Wet Meadow Seed Mix not to be sown into waterlogged soil as seed may rot.



SOFT LANDSCAPE



Existing Woodland to be Retained
Approximate extents of existing woodland to be retained. To be retained in line with BS5837:2012 .



Existing Trees, Scrub and Hedgerow to be Retained
Approximate extents to be retained in line with
BS5837:2012.



Existing Trees, Scrub and Hedgerow to be Removed
Approximate extents to be removed, outside of bird nesting season



Proposed Native Hedgerow
To be planted as 80-100cm BR whips at 5 plants per lin.m.
To consist of at least 5 native shrub species and provide opportunities for nesting and foraging.



Proposed Street Trees
Trees to comprise 12-14cm girth Heavy Standards with 2m clear stem. To be native species e.g. Sorbus aria.



Proposed Native Trees
Trees within swale and open space 10-12cm girth Selected Standard with 2m clear stem. To consist of locally native species.



Proposed Wet Meadow Seed Mix
To be WFG9 Wetland and Ponds by Germinal or similar
approved sown at 4g per sq.m



Proposed Species Rich Grassland
To be WFG20 by Germinal or similar approved sown at 4g
per sq.m

See drawing 5246.01 for plant schedule

Rev B - Adjustments to red line boundary	
GBS	29/02/2024
Rev A - Adjustments to drainage and woodland description	
GBS	10/05/2023



DEP LANDSCAPE ARCHITECTURE LTD

**2 COMMERCIAL STREET
MANCHESTER, M15 4RQ
T: 0161 2419878**

E: info@dep.co.uk
W: www.dep.co.uk

Client

J. Murphy & Sons Limited

Project

Arriva Train Care Access Road

Description

Masterplan incl. Planting (Sheet 3 of 3)

Status

Preliminary

Scale

1:500@A1

Drawn

GBS(TR)

Job number

5246 01

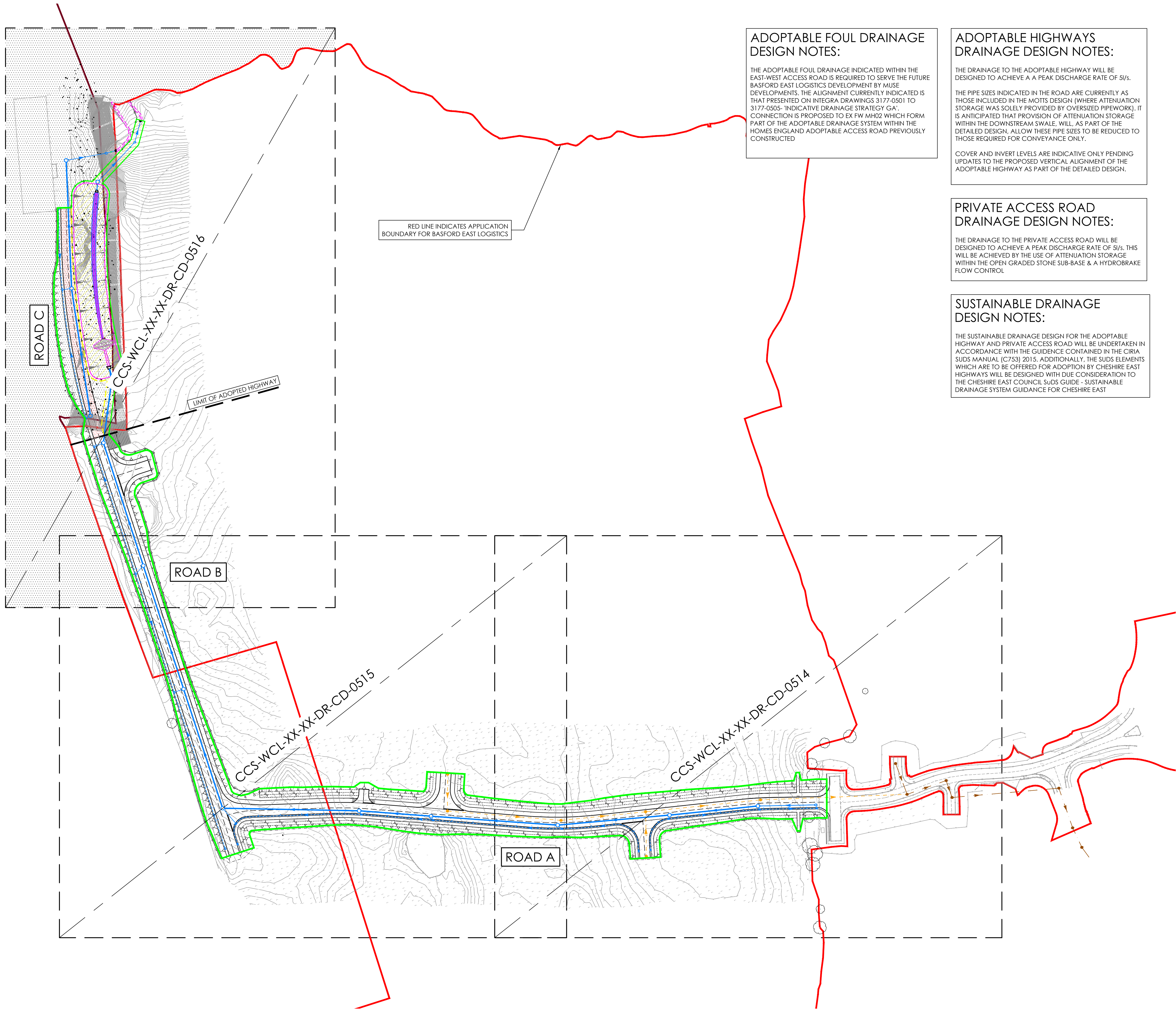
Date

Dec. '23 B

Copyright DEP Landscape Architecture Ltd

All levels and dimensions to be checked on site by contractor prior to commencement; Any variations to be reported to the client. This drawing is to be read in conjunction with all others relating to the project and all information derived accordingly; any anomalies to be reported to the client. Do not scale from this drawing. Use figured dimensions only. Work shown on this drawings to be carried out in accordance with current British Standards and Codes of Practice.

© Copyright to DEP Landscape Architecture Limited. The information shown on this drawing shall not be reproduced or copied in any form without prior written consent from DEP Landscape Architecture Limited.



RED LINE INDICATES APPLICATION
BOUNDARY FOR BASFORD EAST LOGISTICS

ADOPTABLE FOUL DRAINAGE DESIGN NOTES:

THE ADOPTABLE FOUL DRAINAGE INDICATED WITHIN THE EAST-WEST ACCESS ROAD IS REQUIRED TO SERVE THE FUTURE BASFORD EAST LOGISTICS DEVELOPMENT BY MUSE DEVELOPMENTS. THE ALIGNMENT CURRENTLY INDICATED IS THAT PRESENTED ON INTEGRA DRAWINGS 3177-0501 TO 3177-0505- 'INDICATIVE DRAINAGE STRATEGY GA'. CONNECTION IS PROPOSED TO EX FW MH02 WHICH FORM PART OF THE ADOPTABLE DRAINAGE SYSTEM WITHIN THE HOMES ENGLAND ADOPTABLE ACCESS ROAD PREVIOUSLY CONSTRUCTED

ADOPTABLE HIGHWAYS DRAINAGE DESIGN NOTES:

THE DRAINAGE TO THE ADOPTABLE HIGHWAY WILL BE DESIGNED TO ACHIEVE A A PEAK DISCHARGE RATE OF 5l/s.

THE PIPE SIZES INDICATED IN THE ROAD ARE CURRENTLY AS THOSE INCLUDED IN THE MOTTS DESIGN (WHERE ATTENUATION STORAGE WAS SOLELY PROVIDED BY OVERSIZED PIPEWORK). IT IS ANTICIPATED THAT PROVISION OF ATTENUATION STORAGE WITHIN THE DOWNSTREAM SWALE, WILL, AS PART OF THE DETAILED DESIGN, ALLOW THESE PIPE SIZES TO BE REDUCED TO THOSE REQUIRED FOR CONVEYANCE ONLY.

COVER AND INVERT LEVELS ARE INDICATIVE ONLY PENDING UPDATES TO THE PROPOSED VERTICAL ALIGNMENT OF THE ADOPTABLE HIGHWAY AS PART OF THE DETAILED DESIGN.

PRIVATE ACCESS ROAD DRAINAGE DESIGN NOTES:

THE DRAINAGE TO THE PRIVATE ACCESS ROAD WILL BE DESIGNED TO ACHIEVE A PEAK DISCHARGE RATE OF 5l/s. THIS WILL BE ACHIEVED BY THE USE OF ATTENUATION STORAGE WITHIN THE OPEN GRADED STONE SUB-BASE & A HYDROBRAKE FLOW CONTROL

SUSTAINABLE DRAINAGE DESIGN NOTES:

THE SUSTAINABLE DRAINAGE DESIGN FOR THE ADOPTABLE HIGHWAY AND PRIVATE ACCESS ROAD WILL BE UNDERTAKEN IN ACCORDANCE WITH THE GUIDANCE CONTAINED IN THE CIRIA SUDS MANUAL (C753) 2015. ADDITIONALLY, THE SUDS ELEMENTS WHICH ARE TO BE OFFERED FOR ADOPTION BY CHESHIRE EAST HIGHWAYS WILL BE DESIGNED WITH DUE CONSIDERATION TO THE CHESHIRE EAST COUNCIL SUDS GUIDE - SUSTAINABLE DRAINAGE SYSTEM GUIDANCE FOR CHESHIRE EAST

NOTES:

1. ALL DIMENSIONS ARE IN MILLIMETRES UNLESS NOTED OTHERWISE.
2. ALL LEVELS ARE IN METRES (TO ORDNANCE DATUM) UNLESS NOTED OTHERWISE.
3. DO NOT SCALE FROM THIS DRAWING.

LEGEND:

- PROPOSED HIGHWAY DRAINAGE
- PROPOSED HIGHWAY DRAINAGE MANHOLE
- PROPOSED ROAD GULLY
- PROPOSED FILTER DRAIN, FILTER DRAINS IN ADOPTABLE HIGHWAY UNDER FOOTWAY WITH POINT INFLOWS FROM GULLIES
- PROPOSED MUSE ADOPTABLE FW DRAINAGE (+ MANHOLE)
- EXISTING 'HOMES ENGLAND' ADOPTABLE FW SEWER (+ MANHOLE)
- PERMEABLE ASPHALT WITH OPEN STONE SUB-BASE
- EASEMENT FOR ADOPTABLE HIGHWAY DRAINAGE
- PLANNING APPLICATION BOUNDARY FOR BASFORD EAST LOGISTICS
- PLANNING APPLICATION BOUNDARY FOR ACCESS ROAD
- ARRIVA LEASE BOUNDARY
- NETWORK RAIL FREEHOLD OWNERSHIP
- LHA MAINTENANCE PARKING/ LAYDOWN AREA

P06	ET	KM	TB	14.03.24	MINOR UPDATES
P05	ET	KM	TB	08.02.24	OUTFALL ROUTES AMENDED
P04	AP	KM	TB	03.10.23	ARRIVA LEASE BOUNDARY AND MAINTENANCE PARKING SHOWN
P03	ET	KM	LG	04.04.23	ACCESS ROAD PLANNING BOUNDARY SHOWN
P02	ET	KM	LG	24.03.23	UPDATED TO REFLECT FEEDBACK FROM DESIGN TEAM
P01	ET	KM	LG	17.03.23	FIRST ISSUE

REV	DRN	CHK	APP	DATE	DESCRIPTION
Wilde					Brindley Lodge, Adcroft Street, Stockport, Cheshire, SK1 3HS. www.wildecivil.co.uk Tel : 0161-474-7479 Fax : 0161-474-7492

Client

MURPHY
WORLD-CLASS INFRASTRUCTURE
NetworkRail

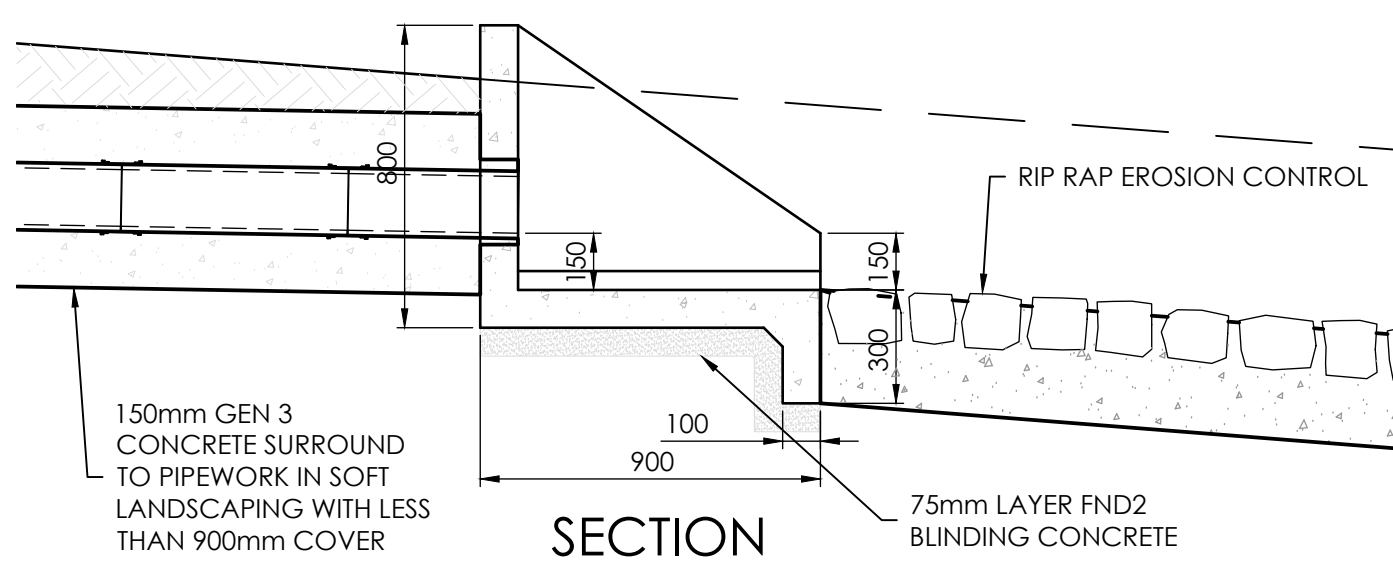
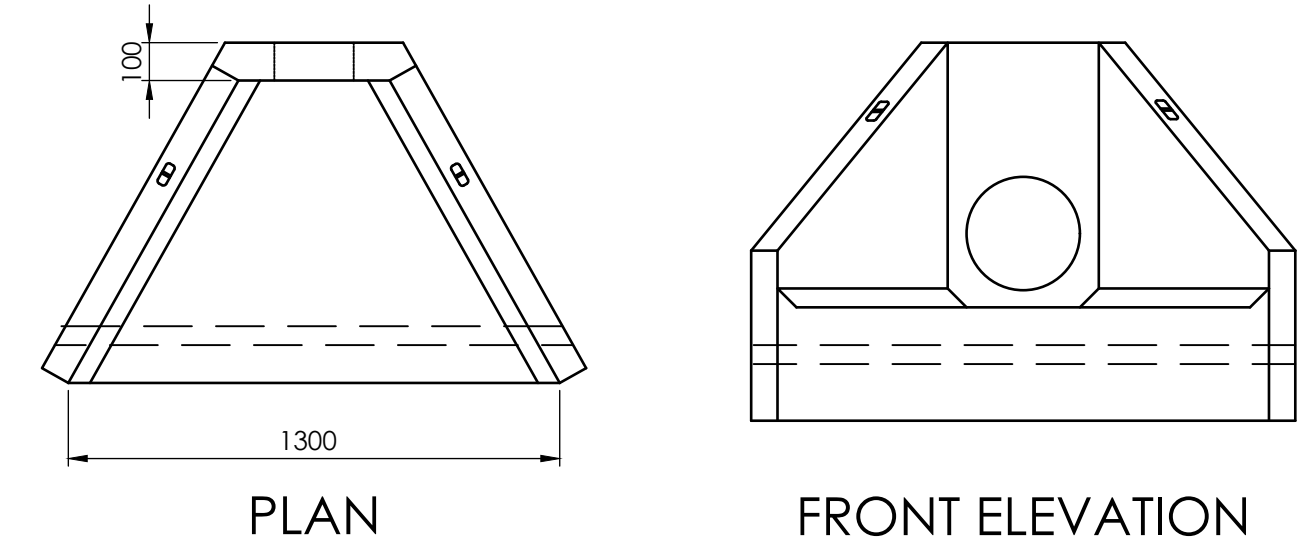
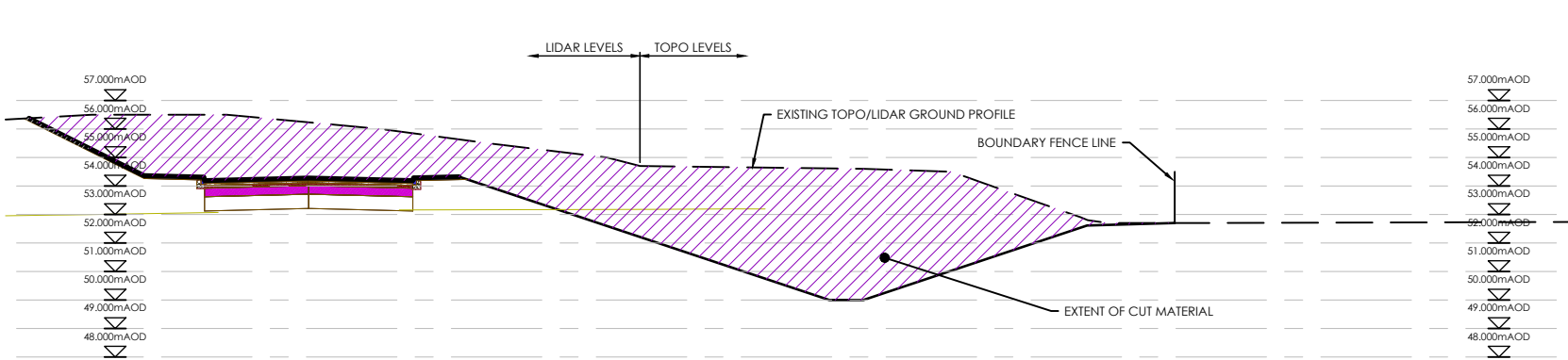
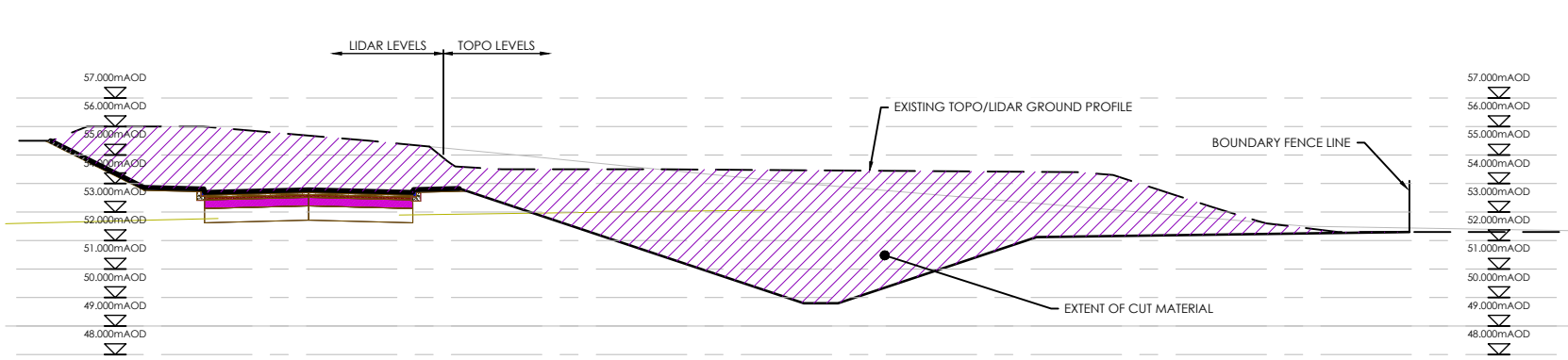
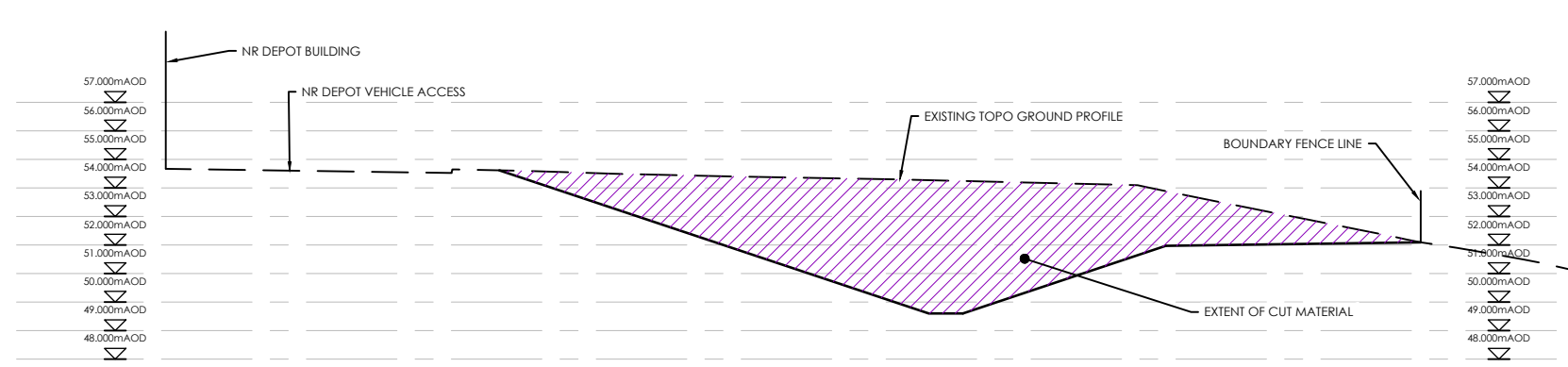
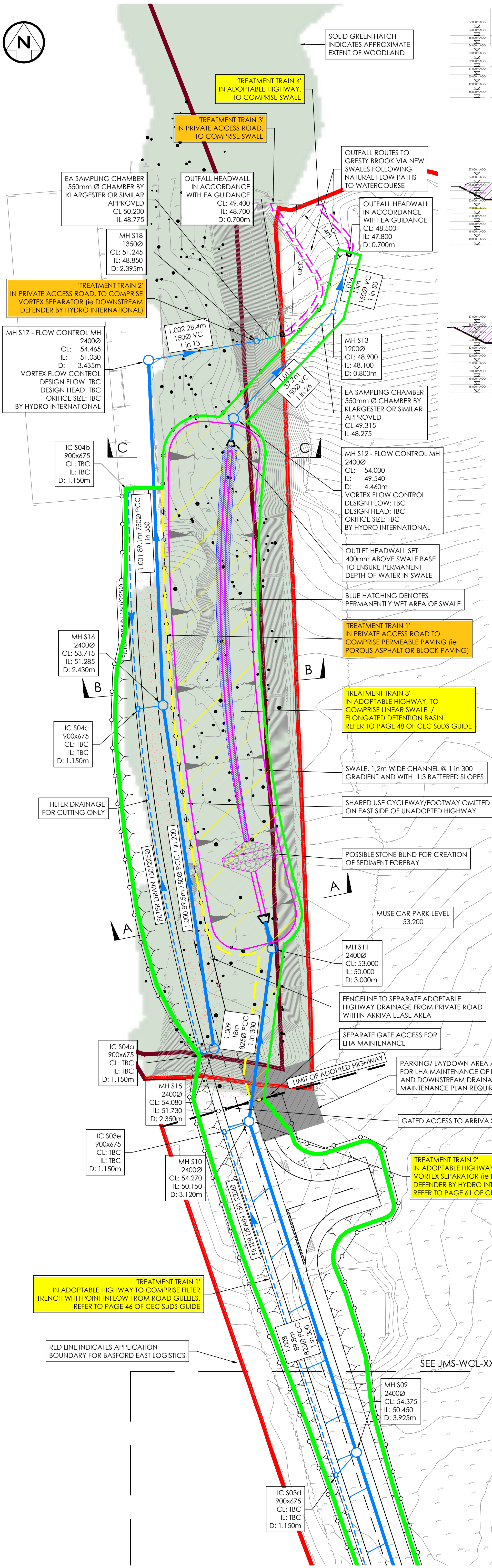
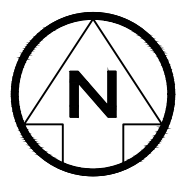
Project

**ARRIVA TRAIN CARE
ACCESS ROAD**

Title

DRAINAGE STRATEGY OVERVIEW

Scale 1:1250	Drawn ET	Date MAR '23	Chkd KM	Approved LG
Drawing No. CCS-WCL-XX-XX-DR-CD-0513				Revision P06
Status INFORMATION				Sheet Size A1



TYPICAL OUTFALL HEADWALL DETAILS
ALTHON H3C HEADWALL (OR SIMILAR APPROVED), FOR 150mm Ø PIPES
SCALE 1:20

NOTES:

- ALL DIMENSIONS ARE IN MILLIMETRES UNLESS NOTED OTHERWISE.
- ALL LEVELS ARE IN METRES (TO ORDNANCE DATUM) UNLESS NOTED OTHERWISE.
- DO NOT SCALE FROM THIS DRAWING.

LEGEND:

- PROPOSED HIGHWAY DRAINAGE
- PROPOSED HIGHWAY DRAINAGE MANHOLE
- PROPOSED ROAD GULLY
- PROPOSED FILTER DRAIN, FILTER DRAINS IN ADOPTABLE HIGHWAY UNDER FOOTWAY WITH POINT INFLOWS FROM GULLIES
- PROPOSED MUSE ADOPTABLE FW DRAINAGE (+ MANHOLE)
- EXISTING 'HOMES ENGLAND' ADOPTABLE FW SEWER (+ MANHOLE)
- PERMEABLE ASPHALT WITH OPEN STONE SUB-BASE
- EASEMENT FOR ADOPTABLE HIGHWAY DRAINAGE
- PLANNING APPLICATION BOUNDARY FOR BASFORD EAST LOGISTICS
- PLANNING APPLICATION BOUNDARY FOR ACCESS ROAD
- ARRIVA LEASE BOUNDARY
- NETWORK RAIL FREEHOLD OWNERSHIP
- LHA MAINTENANCE PARKING/ LAYDOWN AREA

ADOPTABLE HIGHWAYS DRAINAGE DESIGN NOTES:

THE DRAINAGE TO THE ADOPTABLE HIGHWAY WILL BE DESIGNED TO ACHIEVE A PEAK DISCHARGE RATE OF 5l/s.

THE PIPE SIZES INDICATED IN THE ROAD ARE CURRENTLY AS THOSE INCLUDED IN THE MOTTS DESIGN (WHERE ATTENUATION STORAGE WAS SOLELY PROVIDED BY OVERSIZED PIPEWORK). IT IS ANTICIPATED THAT PROVISION OF ATTENUATION STORAGE WITHIN THE DOWNSTREAM SWALE, WILL, AS PART OF THE DETAILED DESIGN, ALLOW THESE PIPE SIZES TO BE REDUCED TO THOSE REQUIRED FOR CONVEYANCE ONLY.

COVER AND INVERT LEVELS ARE INDICATIVE ONLY PENDING UPDATES TO THE PROPOSED VERTICAL ALIGNMENT OF THE ADOPTABLE HIGHWAY AS PART OF THE DETAILED DESIGN.

PRIVATE ACCESS ROAD DRAINAGE DESIGN NOTES:

THE DRAINAGE TO THE PRIVATE ACCESS ROAD WILL BE DESIGNED TO ACHIEVE A PEAK DISCHARGE RATE OF 5l/s. THIS WILL BE ACHIEVED BY THE USE OF ATTENUATION STORAGE WITHIN THE OPEN GRADED STONE SUB-BASE & A HYDROBRAKE FLOW CONTROL

SUSTAINABLE DRAINAGE DESIGN NOTES:

THE SUSTAINABLE DRAINAGE DESIGN FOR THE ADOPTABLE HIGHWAY AND PRIVATE ACCESS ROAD WILL BE UNDERTAKEN IN ACCORDANCE WITH THE GUIDANCE CONTAINED IN THE CIRIA SUDS MANUAL (C753) 2015. ADDITIONALLY, THE SUDS ELEMENTS WHICH ARE TO BE OFFERED FOR ADOPTION BY CHESHIRE EAST HIGHWAYS WILL BE DESIGNED WITH DUE CONSIDERATION TO THE CHESHIRE EAST COUNCIL SUDS GUIDE - SUSTAINABLE DRAINAGE SYSTEM GUIDANCE FOR CHESHIRE EAST

ADOPTABLE FOUL DRAINAGE DESIGN NOTES:

THE ADOPTABLE FOUL DRAINAGE INDICATED WITHIN THE EAST-WEST ACCESS ROAD IS REQUIRED TO SERVE THE FUTURE BASFORD EAST LOGISTICS DEVELOPMENT BY MUSE DEVELOPMENTS. THE ALIGNMENT CURRENTLY INDICATED IS THAT PRESENTED ON INTEGRA DRAWINGS 3177-0501 TO 3177-0505 - 'INDICATIVE DRAINAGE STRATEGY GA'. CONNECTION IS PROPOSED TO EX FW MH02 WHICH FORM PART OF THE ADOPTABLE DRAINAGE SYSTEM WITHIN THE HOMES ENGLAND ADOPTABLE ACCESS ROAD PREVIOUSLY CONSTRUCTED

WOODLAND DESIGNATION:

SEE ADAS LETTER REPORT DATED 15th JANUARY 2024 WHICH SUBSTANTIATES WOODLAND DESIGNATION AS NON-PRIORITY.

P07	ET	KM	TB	14.03.24	MINOR UPDATES
P06	ET	KM	TB	16.02.24	WOODLAND NOTES UPDATED
P05	ET	KM	TB	08.02.24	OUTFALL ROUTES AMENDED, SAMPLING CHAMBERS & HEADWALL DETAIL ADDED
P04	AP	KM	TB	03.10.23	ARRIVA LEASE BOUNDARY AND MAINTENANCE PARKING SHOWN
P03	ET	KM	LG	04.04.23	ACCESS ROAD PLANNING BOUNDARY SHOWN
P02	ET	KM	LG	24.03.23	UPDATED TO REFLECT FEEDBACK FROM DESIGN TEAM
P01	ET	KM	LG	17.03.23	FIRST ISSUE
REV	DRN	CHK	APP	DATE	DESCRIPTION



Brindley Lodge,
Adcroft Street,
Stockport, Cheshire,
SK1 3HS
www.wilddecivil.co.uk
Tel : 0161-474-7479
Fax : 0161-474-7492

Consulting Civil & Structural Engineers



Project
ARRIVA TRAIN CARE ACCESS ROAD

Title
DRAINAGE STRATEGY LAYOUT SHEET 3 OF 3

Scale 1:500	Drawn ET	Date MAR '22	Chkd KM	Approved LG
Drawing No. CCS-WCL-XX-XX-DR-CD-0516	Revision P07	Status PRELIMINARY	Sheet Size A1	